



CLEAN ROOM Class 10M–100M Panels with *CLIMAPLUS* Performance/  
DONN DXLA Suspension System

**LEED Credits**

Recycled Content: 51%  
*CLIMAPLUS* No-Sag Warranty

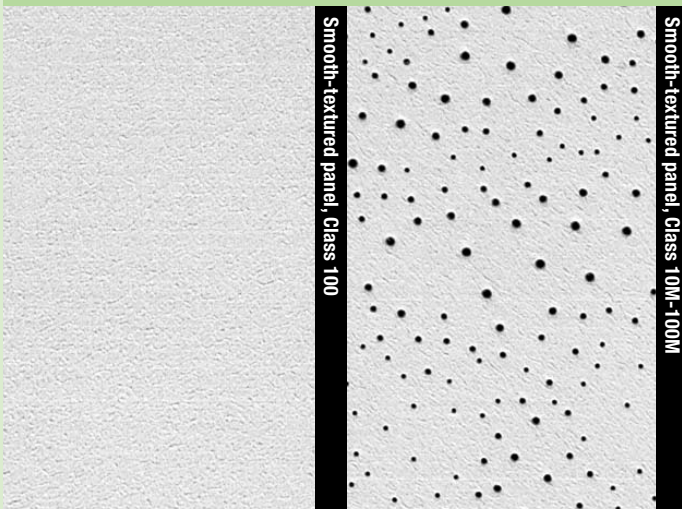
MR			EQ			
Waste Reduction	Recycled Content	Regional Materials <sup>1</sup>	Rapidly Renewable Materials	Low-Emitting Materials	Daylight and Views	Acoustical Performance
	●	●	●		●	●

**Features and Benefits**

- CLEAN ROOM™ *CLIMAPLUS*™ Class 100 and Class 10M-100M panels have an embossed, vinyl-laminated face with sealed back and edges for use in Class 100 or 10M-100M clean rooms.
- FIRECODE™ formulation designed to meet life safety codes.
- *CLIMAPLUS* 30-year lifetime system warranty to withstand conditions up to 104 °F (40 °C)/95% relative humidity without visible sag when used with a DONN® brand suspension system.

**Substrate**

- Water-felted mineral fiber



Call 888.874.2450 for samples



White

**30**

Year System Warranty  
– No visible sag

UL Classified											
Edge	Panel Size	Class <sup>2</sup>	Item No.	NRC <sup>3</sup>	CAC Min.	LR <sup>4</sup>	Color	Grid Options	Recycled Content <sup>5</sup>	Panel Cost	
CLEAN ROOM <i>CLIMAPLUS</i> Class 100 Panels	SQ 	2' x2' x5/8"	56099	—	35	.79	White	A, B, C, D, E	51%	\$\$	
		2' x4' x5/8"	56091	—	35	.79	White	A, B, C, D, E	51%	\$\$	
CLEAN ROOM <i>CLIMAPLUS</i> Class 10M-100M Panels	SQ 	2' x2' x5/8"	56060	.55	35	.79	White	A, B, C, D, E	51%	\$\$	
		2' x4' x5/8"	56090	.55	35	.79	White	A, B, C, D, E	51%	\$\$	
	<b>A</b> DX <sup>®</sup> /DXL <sup>™</sup>	<b>B</b> DXLA <sup>™</sup>	<b>C</b> ZXL <sup>™</sup>	<b>D</b> AX <sup>™</sup>	<b>E</b> CE <sup>™7</sup>						
Grid Profile Options <sup>6</sup>											

**Physical Data/  
Footnotes**

**Product literature**  
Data sheet: SC1811

**ASTM E1264 classification**  
Class 100: Type X, Pattern GI  
Class 10-100M: Type X, Pattern CGI

**ASTM E84 surface burning characteristics**  
Class A  
Flame spread: 25  
Smoke developed: 50

**Weight**  
1.1 lb./sq. ft. (Class 100 panels)  
1.2 lb./sq. ft. (Class 10M-100M panels)

**Thermal resistance**  
R-16

**Maximum backloading**  
See Warranty for details.

**Maintenance**  
Can be cleaned easily with a damp sponge, mild detergent and water. Do not use acetate, ammonia, or highly concentrated chlorine, bromide or other harsh chemicals.

**Footnotes**  
1. Dependent on location; see Sustainability selector.  
2. Fire-rated items: see UL design details.

3. NRC rating *CLEAN ROOM CLIMAPLUS* Class 100 panels is .10. USG does not consider a ceiling panel to be acoustically rated if NRC is less than .50.  
4. LR values are shown as averages.  
5. For details, see Sustainability selector.  
6. Field-cut edges of *CLEAN ROOM* panels may be sealed with white latex paint.  
7. Clean-room-rated applications require a suspension system with gasketed tee flanges such as DOWN CE.

# Olympia Micro™ *ClimaPlus*™



10

magatzem distribuïdor

**Year Availability**

4211, 4221, 4231, 4411, 4421, 4742, 4744



OLYMPIA MICRO Panels with *CLIMAPLUS* Superior Performance/  
DONN FINELINE DXF Suspension System

**LEED Credits**

Recycled Content: 52%  
*CLIMAPLUS* Superior Performance for Mold/Mildew

MR				EQ		
Waste Reduction <sup>1</sup>	Recycled Content	Regional Materials <sup>2</sup>	Rapidly Renewable Materials	Low-Emitting Materials	Daylight and Views	Acoustical Performance
●	●	●	●	●	●	●

**Features and Benefits**

- Nondirectional pattern reduces installation time and waste.
- Economical, fine-textured panel.
- Excellent light reflectance enhances indirect lighting of a space.
- *CLIMAPLUS* 30-year lifetime system warranty to withstand conditions up to 104 °F (40 °C)/95% relative humidity without visible sag when used with a *DONN*® brand suspension system.

**Applications**

- Classrooms
- Hotels
- Reception and lobby areas
- Restaurants
- Retail stores

**Substrate**

- Water-felted mineral fiber



Fine-textured panel

Call 888 874.2450 for samples



White

**30**  
 Year System Warranty  
 – No visible sag  
 – Mold/mildew protection

UL Classified													
Edge	Panel Size	Class	Item No.	NRC	CAC Min.	LR <sup>3</sup>	Color	Grid Options	VOC Emissions	Anti-Mold & Mildew	Recycled Content <sup>4</sup>	Panel Cost	
<b>OLYMPIA MICRO CLIMAPLUS Panels</b>	SQ 	2' x2' x5/8"	Class A	4211	.50	30	.87	White	A, B, C	Low		52%	\$\$
		2' x4' x5/8"	Class A	4411	.50	30	.87	White	A, B	Low		52%	\$\$
	SLT 	2' x2' x5/8"	Class A	4221	.50	35	.87	White	D	Low		52%	\$\$
		2' x4' x5/8"	Class A	4421	.50	35	.87	White	D	Low		52%	\$\$
	FLB 	2' x2' x5/8"	Class A	4231	.50	35	.87	White	E, F, G	Low		52%	\$\$
		2' x4' x5/8"	Class A	4431	.50	35	.87	White	E, F, G	Low		52%	\$\$
<b>OLYMPIA MICRO CLIMAPLUS Illusion Two/24 Panels</b> The look of 2' x 2' panels	SLT <sup>5</sup> 	2' x4' x3/4"	Class A	4742	.50	35	.87	White	D	Low		52%	\$\$
	ILT <sup>5</sup> 	2' x4' x3/4"	Class A	4744	.50	35	.87	White	E, H	Low		52%	\$\$

<b>Illusion Two/24</b>
<b>Patterns</b>

**Legend**

**Low Emissions (VOC Class)**  
 Classified as low-emitting per standards established by the Collaborative for High-Performance Schools (CHPS), following California Specification 01350 testing methods.

**CLIMAPLUS Superior Performance<sup>7</sup>**  
 Contains a broad-spectrum antimicrobial treatment on the face and back of the panel that provides guaranteed resistance against the growth of mold/mildew, fungi, yeast, algae, and Gram-positive and Gram-negative odor/stain-causing bacteria.

A	B	C	D	E	F	G	H
DX <sup>®</sup> /DXL™	DXW™	CENTRICITEE™ DXT	DX/DXL	E CENTRICITEE DXT	F FINELINE® DXF	G FINELINE® 1/8 DXFF	H CENTRICITEE DXT

**Physical Data/ Footnotes**

**Product literature**  
 Data sheet: SC2180

**ASTM E1264 classification**  
 Type III, Form 2, Pattern CE

**ASTM E84 surface burning characteristics**  
 Class A  
 Flame spread: 25  
 Smoke developed: 50

**Weight**  
 .78-1.03 lb./sq. ft.

**Thermal resistance**  
 R-1.4 (5/8" panels)  
 R-1.7 (3/4" panels)

**Maximum backloading**  
 See Warranty for details.

**Maintenance**  
 Can be cleaned easily with a soft brush or vacuum.

**Footnotes**

1. Applies when USG acoustical ceilings recycling program is utilized.
2. Dependent on location; see Sustainability selector.
3. LR values are shown as averages.
4. For details, see Sustainability selector.
5. Panels have 15/16" routing.
6. Panels have 9/16" routing.
7. Panel face and back surfaces treated with a patented, broad-spectrum antimicrobial standard

formulation that inhibits and retards the growth of mold/mildew, fungi, yeast, and odor/stain-causing Gram-positive and Gram-negative bacteria. For details, see *Ceiling Systems Warranties and Limitations* (SC2102) and *CLIMAPLUS Ceilings Certification of Performance* (SC2451).



RADAR Panels/  
DONN DX/DXL Suspension System

**LEED Credits**  
Recycled Content: 25% – 50%

MR				EQ		
Waste Reduction <sup>1</sup>	Recycled Content	Regional Materials <sup>2</sup>	Rapidly Renewable Materials	Low-Emitting Materials	Daylight and Views	Acoustical Performance
●	●	●	●	●	●	●

**Features and Benefits**

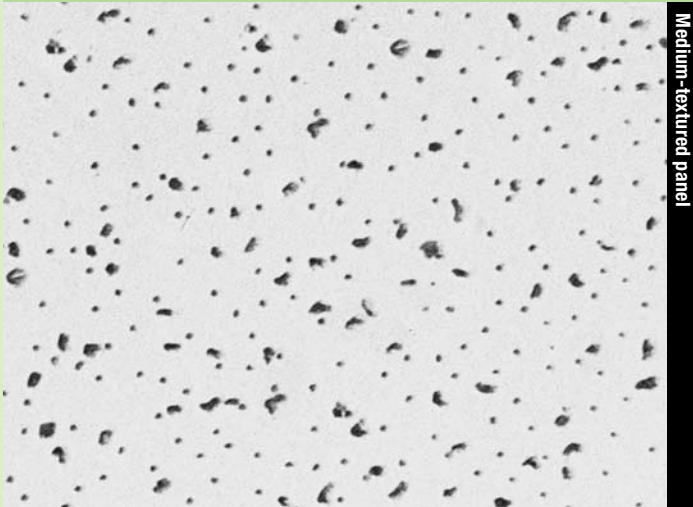
- Non-directional pattern with a fresh, clean appearance offers fast, efficient installation.
- Economical, all-purpose ceiling pattern offered in many sizes.
- Optional FIRECODE™ formulation designed to meet life safety codes.

**Applications**

- Schools
- Corridors
- Offices
- Retail stores

**Substrate**

- Water-felted mineral fiber



Medium-textured panel

Call 888 874.2450 for samples

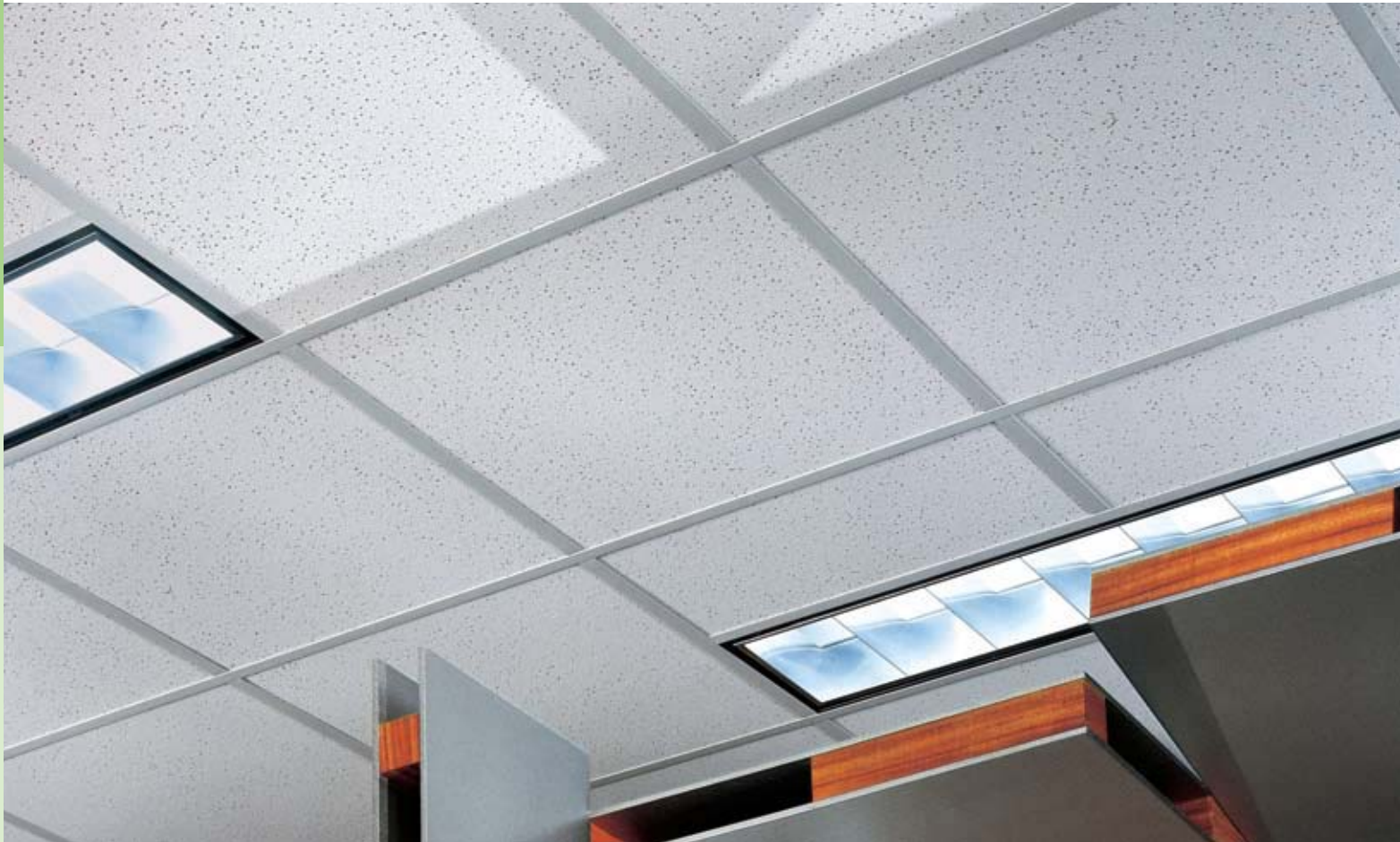


White

UL Classified												
Edge	Panel Size Imperial Metric (mm)	Class <sup>3</sup>	Item No. Imperial Metric	NRC	CAC Min.	LR <sup>4</sup>	Color	Grid Options	VOC Emissions	Recycled Content <sup>5</sup>	Panel Cost	
RADAR Panels	SQ 	2' x2' x5/8"	Class A	2110	.55	33	.85	White	A, B, C	Low	25%	\$
		600 x 600 x 15		ME2110								
		2' x2' x5/8"		2115	.55	35	.85	White	A	Low	48 – 50%	\$
		2' x4' x5/8"	Class A	2310	.55	35	.85	White	A, B	Low	25%	\$
		600x1200x15		ME2310								
		2' x4' x5/8"		2315	.55	35	.85	White	A	Low	48 – 50%	\$
		2' x5' x5/8"	Class A	2619	.55	35	.85	White	A, B	Low	25%	\$
		20' x60' x5/8"	Class A	2617	.55	35	.85	White	A, B	Low	25%	\$
	2' x4' x3/4"	Class A	2311	.60	35	.85	White	A, B	Low	25%	\$	
	30' x60' x3/4"	Class A	2618	.60	35	.85	White	A, B	Low	25%	\$	
	SLT 	2' x2' x5/8"	Class A	2120	.55	33	.85	White	D	Low	25%	\$
		600x600x15		ME2120								
		2' x2' x5/8"		2125	.55	35	.85	White	D	Low	48 – 50%	\$
		2' x4' x5/8"	Class A	2320	.55	35	.85	White	D	Low	25%	\$
FLB 	2' x2' x5/8"	Class A	2130	.55	33	.85	White	E, F, G	Low	25%	\$	
RADAR Tile <sup>6,7</sup>	BESK 	Class A	2990	.50	40	.85	White	H	Low	25%	\$\$\$	
RADAR Illusion Two/24 Panel The look of 2' x2' panels	SLT 	Class A	2742	.55	35	.89	White	D	Low	25%	\$\$	

Pattern	Illusion Two/24	Legend							
		<b>Low Emissions (VOC Class)</b> Classified as low-emitting per standards established by the Collaborative for High-Performance Schools (CHPS), following California Specification 01350 testing methods.							
		<b>A</b> DX <sup>®</sup> /DXL™	<b>B</b> DXW™	<b>C</b> CENTRICITEE™ DXT	<b>D</b> DX/DXL	<b>E</b> CENTRICITEE DXT <sup>®</sup>	<b>F</b> FINELINE <sup>®</sup> DXF	<b>G</b> FINELINE <sup>®</sup> 1/8 DXFF	<b>H</b> DX <sup>®</sup> /DXL™ Concealed
Grid Profile Options									

Physical Data/ Footnotes	Product literature Data sheet: SC2288	Weight .61-1.15 lb./sq. ft.	Maximum backloading See Warranty for details.	Footnotes	6. Contact USG for adhesive recommendation for 12"x12" glue-up applications.
	<b>ASTM E1264 classification</b> Type III, Form 2, Pattern C, D, E  <b>ASTM E84 surface burning characteristics</b> Class A Flame spread: 25 Smoke developed: 50	<b>Thermal resistance</b> R-1.4 (Class A, 5/8" panels and tile) R-1.7 (Class A, 3/4" panels) R-1.4 (Class A, 15 mm panels) R-1.6 (Firecode, 5/8" panels)	<b>Maintenance</b> Can be cleaned easily with a soft brush or vacuum.	1. Applies when USG acoustical ceilings recycling program is utilized. 2. Dependent on location; see Sustainability selector. 3. Fire-rated items: see UL design details. 4. LR values are shown as averages. 5. For details, see the Sustainability selector.	7. Not UL Classified for acoustics. 8. Maximum 2' x 2' for square panels.



RADAR Panels with CLIMAPLUS Superior Performance/  
DONN DX/DXL Suspension System

**LEED Credits**

Recycled Content: 28% – 50%  
CLIMAPLUS Superior Performance for Mold/Mildew

MR				EQ		
Waste Reduction <sup>1</sup>	Recycled Content	Regional Materials <sup>2</sup>	Rapidly Renewable Materials	Low-Emitting Materials	Daylight and Views	Acoustical Performance
●	●	●	●	●	●	●

**Features and Benefits**

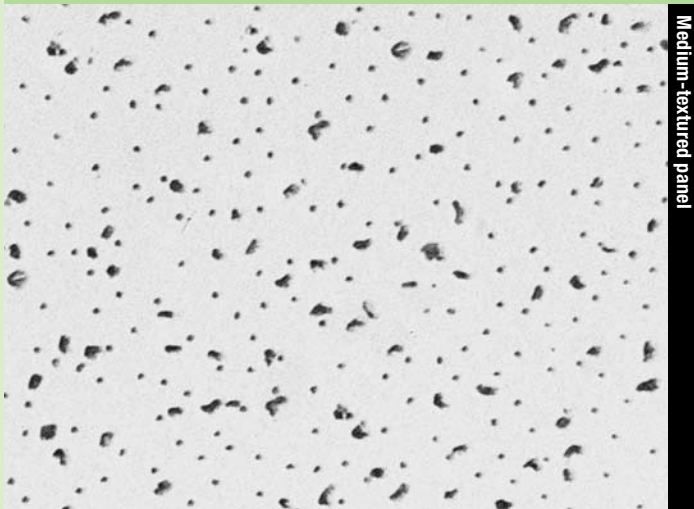
- Non-directional pattern.
- CLIMAPLUS 30-year lifetime system warranty to withstand conditions up to 104 °F (40 °C)/95% relative humidity without visible sag when used with a DONN® brand suspension system.
- Optional FIRECODE™ formulation.
- High-durability panels are 55% more durable than standard panels.

**Applications**

- Schools
- Corridors
- Lobby areas
- Offices
- Retail stores

**Substrate**

- Water-felted mineral fiber



Medium-textured panel

**Call 888.874.2450 for color samples**

See individual items for color availability.

**Standard Colors**

White  
Parchment 103   Manila 246   Beige 142   Straw 143   Sandstone 090   Taupe 107  
Charcoal 534   Flat Black 205

**30**  
Year System Warranty  
– No visible sag  
– Mold/mildew protection

UL Classified														
Edge	Panel Size Imperial Metric (mm) <sup>3</sup>	Class <sup>4</sup>	Item No. Imperial Metric	NRC	CAC Min.	LR <sup>5</sup>	Color <sup>6</sup>	Grid Options	VOC Emissions	Anti-Mold & Mildew	Abuse-Resistant	Recycled Content <sup>7</sup>	Panel Cost	
RADAR CLIMAPLUS Panels	SQ	2' x 2' x 5/8"	Class A	<b>2210</b>	.55	33	.84	White Standard	A, B	Low		28 – 44%	\$	
		2' x 2' x 5/8"		<b>2215</b>	.55	35	.84	White	A	Low		48 – 50%	\$	
		2' x 4' x 5/8" 600x1200x15	Class A	<b>2410</b> ME2410	.55	35	.84	White Standard	A	Low		28 – 44%	\$	
		2' x 4' x 5/8"		<b>2415</b>	.55	35	.84	White Flat Black	A	Low		48 – 50%	\$	
		2' x 4' x 5/8"	Class A	<b>2410P<sup>8</sup></b>	.55	35	.85	White	A, B	Low		25%	\$	
	SLT	2' x 2' x 5/8" 600x600x15	Class A	<b>2220</b> ME2220	.55	33	.84	White Standard Flat Black not available	C	Low		28 – 44%	\$	
		2' x 2' x 5/8"		<b>2225</b>	.55	35	.84	White	C	Low		48 – 50%	\$	
		2' x 4' x 5/8"	Class A	<b>2420</b>	.55	35	.84	White	C	Low		28 – 44%	\$	
		2' x 4' x 5/8"		<b>2425</b>	.55	35	.84	White	C	Low		48 – 50%	\$	
	FLB	2' x 2' x 5/8"	Class A	<b>2230</b>	.55	33	.84	White	D, F, G	Low		28 – 44%	\$	
	2' x 2' x 5/8"		<b>2235</b>	.55	35	.84	White	D, F, G	Low		48 – 50%	\$		
RADAR CLIMAPLUS High-Durability Panels	SQ	2' x 2' x 5/8"	Class A	<b>2207</b>	.55	35	.84	White	A, B	Low			28 – 44%	\$
		2' x 4' x 5/8"	Class A	<b>2407</b>	.55	35	.84	White	A, B	Low			28 – 44%	\$
	SLT	2' x 2' x 5/8"	Class A	<b>2227</b>	.55	35	.84	White	C	Low			28 – 44%	\$
RADAR CLIMAPLUS Tile	SF <sup>9</sup>	12"x12"x5/8"	Class A	<b>2570</b>	.45 <sup>10</sup>	35	.84	White	Adhesive Staple	Low		28 – 44%	\$\$\$	

**Legend**

**Low Emissions (VOC Class)**  
Classified as low-emitting per standards established by the Collaborative for High-Performance Schools (CHPS), following California Specification 01350 testing methods.

**CLIMAPLUS Superior Performance<sup>11</sup>**  
Contains a broad-spectrum antimicrobial treatment on the face and back of the panel that provides guaranteed resistance against the growth of mold/mildew, fungi, yeast, algae, and Gram-positive and Gram-negative odor/stain-causing bacteria.

A	B	C	D	E	F	G	H
DX®/DXL™	CENTRICITEE™ DXT	DX/DXL	CENTRICITEE DXT	CENTRICITEE DXLT	FINELINE® DXF	FINELINE® 1/8 DXFF	FINELINE® DXLF

Physical Data/ Footnotes	Product literature Data sheet: SC2127	Weight .61-1.15 lb./sq. ft.	High-Durability panels ASTM D1037 – falling-ball impact test.	5. LR values are shown as averages.	11. Panel face and back surfaces treated with a patented, broad-spectrum antimicrobial standard formulation that inhibits and retards the growth of mold/mildew, fungi, yeast, and odor/stain-causing Gram-positive and Gram-negative bacteria. For details, see <i>Ceiling Systems Warranties and Limitations</i> (SC2102) and <i>CLIMAPLUS Ceilings Certification of Performance</i> (SC2451).
	<b>ASTM E1264 classification</b> Type III, Form 2, Pattern C, D, E	<b>Thermal resistance</b> R-1.4 (5/8" Class A panels and tile) R-1.6 (FIRECODE panels)	<b>Footnotes</b> 1. Applies when USG acoustical ceilings recycling program is utilized. 2. Dependent on location; see Sustainability selector. 3. Metric available in White only. 4. Fire-rated items: see UL design details.	6. See Colors selector for more information. 7. For details, see Sustainability selector. 8. Includes plastic coating, Gardner-Scrubability tested to 3,000 cycles (ASTM D246). 9. SF = staple flange. 10. Not UL Classified for acoustics.	
	<b>ASTM E84 surface burning characteristics</b> Class A Flame spread: 25 Smoke developed: 50	<b>Maximum backloading</b> See warranty for details.			
		<b>Maintenance</b> Can be cleaned easily with a soft brush or vacuum.			